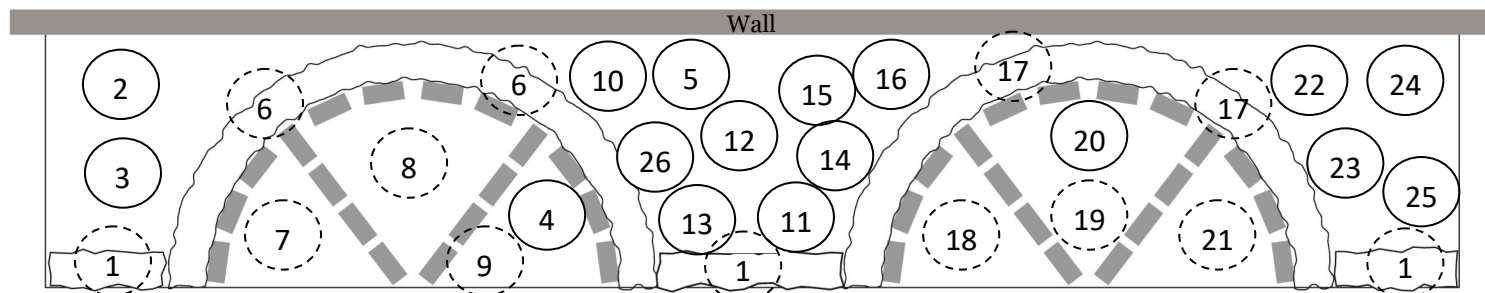


Wellington Botanic Garden ki Paekākā

Healing herbs section—east



Key



Plant



Ground cover/hedge

Decoding plant names

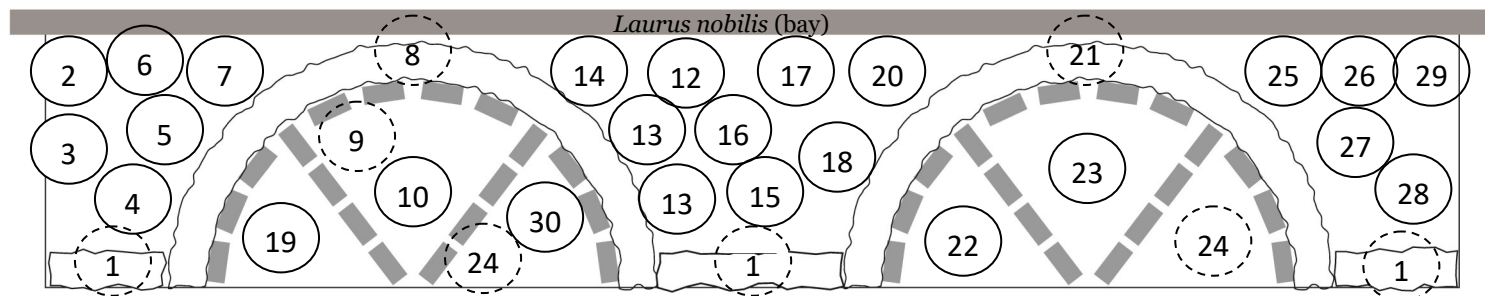
Scientific name 'cultivar' (common name)

syn: synonym

- | | | | |
|----|---|----|--|
| 1 | <i>Alchemilla mollis</i> (lady's mantle) | 16 | <i>Tanacetum parthenium</i> (feverfew) – syn. <i>Chrysanthemum</i> |
| 2 | <i>Pelargonium tomentosum</i> (peppermint) | 17 | <i>Teucrium marum</i> (cat thyme) hedge |
| 3 | <i>Lavandula dentata</i> (fringed lavender) | 8 | <i>Geum urbanum</i> (wood avens) |
| 4 | <i>Achillea filipendulina</i> (fernleaf yarrow) | 19 | <i>Ajuga reptans</i> (bugle) |
| 5 | Summer— <i>Althaea rosea</i> (hollyhock) | 20 | <i>Hamamelis virginiana</i> (witch hazel) |
| 6 | <i>Lavandula angustifolia</i> 'Pacific Blue' (lavender) | 21 | <i>Primula vulgaris</i> 'Maroon' (primrose) |
| 7 | <i>Potentilla erecta</i> (tormentil) | 22 | <i>Parietaria Judaica</i> (spreading pellitory) |
| 8 | <i>Agrimonia eupatoria</i> (a grimony) | 23 | <i>Ornithogalum caudatum</i> (false sea onion) |
| 9 | <i>Viola odorata</i> (sweet Violet) | 24 | <i>Inula helenium</i> (horse-heal) |
| 10 | <i>Helenium autumnale</i> (sneezeweed) | 25 | <i>Hypericum perforatum</i> (St John's wort) |
| 11 | <i>Achillea millefolium</i> (yarrow) – in pot | 26 | <i>Acorus gramineus</i> |
| 12 | <i>Artemisia vulgaris</i> (mugwort) – in bucket | | |
| 13 | <i>Achillea ptarmica</i> (sneezewort) | | |
| 14 | <i>Artemisia dracunculus</i> (Russian tarragon) | | |
| 15 | <i>Solidago canadensis</i> (golden rod) | | |

Wellington Botanic Garden ki Paekākā

Healing herbs section—west



Key



Plant



Ground cover/hedge

Decoding plant names

Scientific name 'cultivar' (common name)

- | | | | |
|----|---|----|--|
| 1 | <i>Alchemilla mollis</i> (lady's mantle) | 17 | <i>Polygonatum odoratum</i> (Solomon's seal) |
| 2 | <i>Symphytum officinale</i> (comfrey) | 18 | <i>Eriocephalus africanus</i>
(African wild rosemary) |
| 3 | <i>Eupatorium purpureum</i>
(sweet Joe-Pye weed) | 19 | <i>Convallaria majalis</i> (lily of the valley) |
| 4 | <i>Pulmonaria longifolia</i> 'Bertrum Anderson' | 20 | <i>Lythrum salicaria</i> (purple loosestrife) |
| 5 | <i>Hyssopus officinalis</i> (hyssop) | 21 | <i>Lavandula angustifolia</i>
'Pacific Blue' (Lavender) |
| 6 | <i>Aconitum napellus</i> (monkshood) | 22 | <i>Stachys officinalis</i> (betony) |
| 7 | <i>Galega officinalis</i> (goats rue) | 23 | <i>Prunella vulgaris</i> (selfheal) |
| 8 | <i>Teucrium marum</i> (cat thyme) | 24 | <i>Calendula officinalis</i> (marigold) |
| 9 | <i>Anthemis tinctoria</i> 'Sauce Hollandaise' | 25 | <i>Artemisia afra</i> |
| 10 | <i>Glycyrrhiza glabra</i> (Licorice) | 26 | <i>Artemisia vulgaris</i> (mugwort) |
| 11 | <i>Papaver rhoeas</i> (poppy) | 27 | <i>Filipendula ulmaria</i> (meadowsweet) |
| 12 | <i>Cynara cardunculus</i> (cardoon) | 28 | <i>Monarda didyma</i> (Bee balm) |
| 13 | <i>Echinacea purpurea</i>
(pale purple coneflower) | 29 | <i>Scrophularia nodosa</i> (figwort) |
| 14 | <i>Digitalis purpurea</i> (foxglove) | 30 | <i>Platycodon grandifloras</i> (balloon flower) |
| 15 | <i>Artemisia absinthium</i> (wormwood) | | |
| 16 | <i>Althaea officinalis</i> (marshmallow) | | |



Wellington Gardens

Absolutely Positively
Wellington City Council
Me Heke Ki Pōneke