

December 2022

Garden News

with the Friends of the Wellington Botanic Garden ki Paekākā

Friends launch Garden Gin

On October 15, the Friends of the Wellington Botanic Garden launched their *Down the Garden Path* Gin in a fundraising event held in the Begonia House foyer. *Continued on page 4-5.*



Photos: Setting up the Begonia House foyer; Bec from The Bond Store.



Friends of the
Wellington Botanic Garden

Contents

- President's Patch
- Botanic Garden ki Paekākā Manager's report to the Friends
- Australasian Botanic Garden Guides Conference
- In and Around the Garden
 - Friends Gin fundraiser
 - Your Garden Photos
- Events and projects
 - Friends Christmas Mix and Mingle
 - Music at the Begonia
 - Walks & Talks: Wellington Botanic Garden - A pharmacy by any other name?
 - Science /Educational information
 - Kew Garden prints
- Finding inspiration in the garden
- Contact details

President's Patch

As the year draws to a close, I can report that your organisation will finish 2022 in good heart and with encouraging developments to show for it.

AGM

The Annual General Meeting held on 17 September, produced a full committee that includes three new members: Nichole Browne who takes over the Treasurer role, Liz Lander who will kick off some of the projects we have had on the back burner and Bart Van Stratum who will be a great addition to the propagation and comms team. I welcome all three and see an exciting year ahead.

The AGM also marked our farewell to long standing committee members Ann McLean and Rob Hole. They have been stalwarts to this and previous committees. I thank them for their tireless contributions over many years and wish them all the best for their future endeavours.

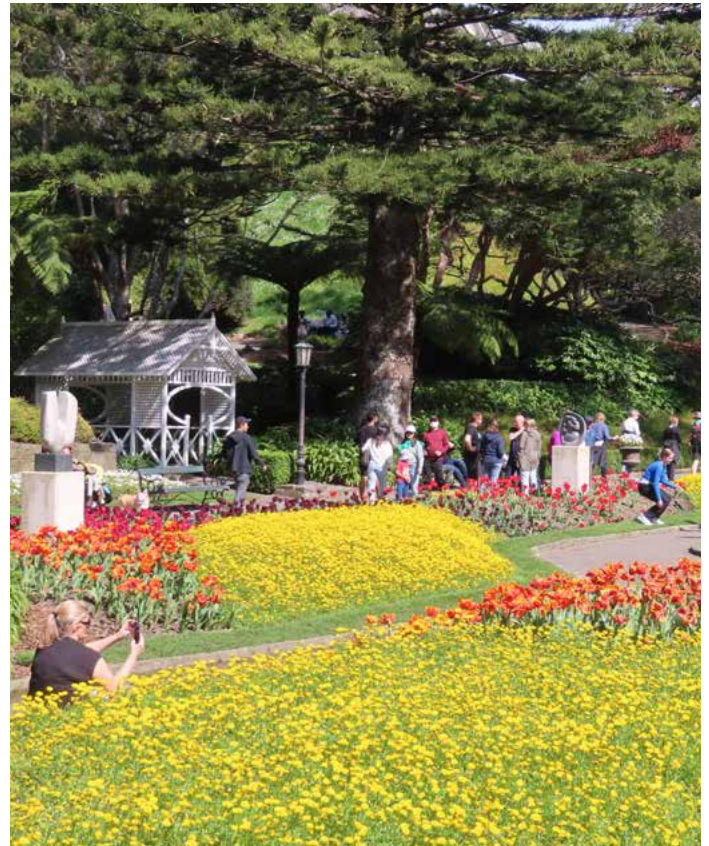
Kew botanical prints

In addition to the meeting we also had the opportunity to display and sell a number of Kew botanical prints which were kindly donated by a fellow Friend. Some prints were sold on the day and the balance will be available through Peter Wedde Antiques. The images will be available to view through the [Peter Wedde Antiques](#) page and the sales will be gratis. A big thank you to Peter for supporting the Friends. *See Page 10 for further information and example of prints.*

Gin fundraiser

This year has seen the recommencement of our usual activities as well as the introduction of the Friends gin, Down the Garden Path. The October launch went well with almost 100 bottles sold on the night. Gin sales, donations, auctions and raffles raised almost \$12,000 which is a great start to the Friends kitty for the education centre in the renovated Begonia House. The popularity of the gin continues to grow with over 250 bottles sold since the launch on 15 October. *See page 5 for more information.*

The popularity of the gin is due the quality of the gin and the Friends story. I know many are buying bottles for Christmas presents. If you have missed out you can buy a bottle at The Bond Store table at the Thorndon Fair. Remember, a percentage of each bottle sale is donated to the Friends.



Spring Festival photo taken by Ann McLean

Friends Olive Oil

Following on the success of the gin, the Friends are investigating a similar themed table olive oil.

It may be available before Christmas in the Treehouse shop and would make a handy stocking stuffer.

Thank you for your support during the year. I take this opportunity to wish our members compliments of the season, a Merry Christmas and a calm and fruitful New Year!

Mazz Scannell

Botanic Garden ki Paekākā Manager's report to the Friends

The joys of spring are flowers and lush growth in the garden. Along with that comes the lush growth in weeds that we are not so keen on and lawns verging on impossible to contain! However, our spring visitors including those from the cruise ships are thoroughly enjoying their garden visits and it is nice to have them back.

We recently hosted the NZ Arboricultural Association National Tree Climbing Championships in the Main Gardens. This was a great event with a good number of participants in the five sections of competition over the two days. The cruise ship passengers were fascinated by the challenges strength and skills of the participants and many stopped to watch the proceedings.

Refurbishments

Work is progressing well on the refurbishment of the Main Gardens toilets. In as much as toilets can be described as 'fabulous' these will be, when finished and well worth a trip to see! With almost a complete rebuild, seismic strengthening, tile lining and a reinstated tile roof.

Work has just been completed to resurface half of William Wakefield Way. With construction traffic over the years on the Nursery, Treehouse and Discovery Garden the road was much the worse for wear. This combined with the completion of the ramp, make for a much more inviting approach to the Treehouse.

Work continues on the redesign of the playground with the 'structured' design concepts agreed and work on a phase two area lower down which will have a much stronger focus on natural play. This will include at least one Māori game and elements which traditionally formed part of Māori play...and that we know children love interacting with!

General Maintenance

The large pine that fell from Mariri Spur (above the Duckpond) has now been removed and the badly damaged Streamside Garden tidied up. We will be leaving further work on this until the autumn, partly to see which plants successfully regenerate and partly as it is now too late to be undertaking new plantings. Arborists will be in shortly to do some remedial pruning on trees near the one that fell and a safety assessment will be conducted on the whole Mariri Spur tree cohort.

Ōtari-Wiltons Bush book

The Ōtari-Wiltons Bush Trust launched the book 'Ōtari -Two Hundred Years of Ōtari-Wiltons Bush' recently. Penned by Bee Dawson it is a great social history and record of Ōtari. At present copies are available from the Trust in the weekends at the Ōtari Visitor Centre Tāne Whakapiripiri and from the Treehouse. Ōtari also features in the recent publication '100 Great Gardens of the World' and is the only New Zealand garden to do so. Both the Botanic Garden and Ōtari can be



Before and after photos of the Treehouse ramp refurbishment.

found in yet another recently published book 'New Zealand Gardens to Visit'.... also available in the Treehouse Shop.

Sharing of knowledge

Following on from the signing of the MoU with Singapore and Canberra Gardens our Conservation and Science Advisor Karin van der Walt presented online and tutored at the Botanic Gardens Conservation International Exceptional Species Workshop. This involved presenters and trainees from around the world. It is great to see Wellington Gardens represented in this work.

Bolton Street cemetery

The Friends of Bolton Street cemetery recently opened the revamped museum exhibition in the former Chapel. Designed, fabricated and installed by Trestle Creative it is a social and historical insight to the cemetery and its relationship to the city. It is open daily from 9-4.

Begonia House and Gin Launch

Judging by the number of comments from my colleagues the Down The Garden Path gin has been a hit. The launch event on the Begonia House was an excellent event and my thanks must go to Mazz Scannell and her assistants for pulling it together and making such a great success of it. The event reinforced to those present what a special location the Begonia House is for events.

Ngā mihi nui

David Sole - On Behalf of the Wellington gardens Team

Garden visits

17th Australasian Botanic Guides Conference, October 2022



Anne-Marie Ngan as a trainee Guide and a member of the Friends Committee was thrilled to have the opportunity to attend the Australasian Guides' conference in Melbourne recently.

The theme this year was **Share and Inspire** and the 110 attendees certainly did that. They invited all Friends of the Wellington Botanic Garden to visit their gardens across Australia.

Photos at the right (top to bottom) show:

- The Royal Botanic Garden Melbourne of 38 hectares is a 35-minute walk for the Melbourne CBD.
- The Royal Botanic Gardens Victoria organisation encompasses two diverse sites at Melbourne and Cranbourne.

The beautifully-designed Australian Cranbourne Garden (an hour's drive from Melbourne) with the well-known Landscape Walk.

- The volunteers from the Melbourne Friends who hosted this most successful conference stand out in red!

Anne-Marie will give a brief slide presentation of the highlights for the Friends, at the Christmas Drinks on Thursday 8 December at the Treehouse.

A fuller report will be included in the March 2023 newsletter.



In and around the garden

Friends fundraiser - Down the Garden Path Gin



On the 15 October the Friends of the Wellington Botanic Garden launched their *Down the Garden Path Gin* in a fundraiser event held in the Begonia House.

The Ultimate Gin Launch

Crafted by Bec Kay and her team at The Bond Store for the Friends of the Wellington Botanic Garden.

Key botanicals include kawakawa leaf, and from the Botanic Garden, a hint of rosehip. The result is a dry and crisp London gin that reflects the complexity and beauty of a garden. Best served with pure tonic.

\$25 from each bottle sold is donated to the Friends of the Wellington Botanic Garden to be reinvested in the Gardens.

The gin can be purchased from The Bond Store:

<https://thebondstore.co.nz/>

The gin is selling extremely well with very positive feedback. It could be a great Christmas gift idea.



Articles on The Shout NZ and insideFMCG:

The Bond Store creates flora-infused gin for Wellington Botanic Garden



Kiwi distillery The Bond Store has teamed up with Friends of the Wellington Botanic Garden to develop a flora-infused gin and help raise funds for the organisation.
Said to be the first of its kind in New Zealand, it was inspired by a similar collaboration created for Kew Gardens in the UK.

"Named "Down the Garden Path", the boutique gin pays homage to the Botanic Gardens, and alongside traditional botanicals, the infusion incorporates native kawakawa and rosehips specially harvested from the Lady Norwood Rose Gardens..."

Read more here:

<https://www.theshout.co.nz/kapiti-distillery-creates-first-of-its-kind-fundraising-gin/>

Kāpiti distillery creates first-of-its-kind fundraising gin



Kāpiti coast distillery, the Bond Store, has created a limited-edition gin for the Friends of the Wellington Botanic Garden.

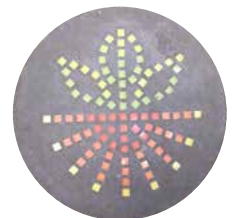
"The collaboration is believed to be the first of its kind in New Zealand, ..."

Read more here:

<https://insidefmcg.com.au/2022/10/18/the-bond-store-creates-flora-infused-gin-for-wellington-botanic-garden/>

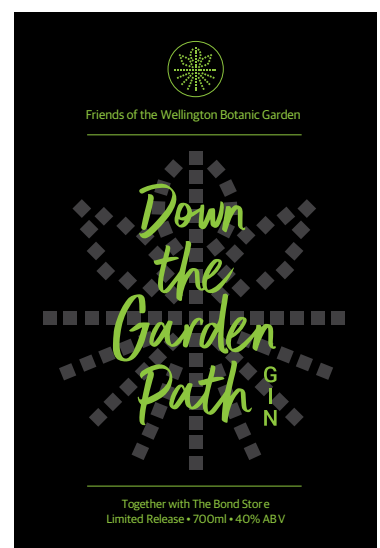
Label name and design

Down the Garden Path name and design was inspired by the Downhill Path pavers. These show the downhill walkway from the Cable Car to the City.



The Friends funded the ceramic stepping stones a number of years ago; the incorporation of the design as part of the label is a salute to the projects of past Friends.

Keep an eye out for the next collaboration of the Friends – a table Olive Oil which will be available in the Treehouse shop soon.



Concept and Graphic Design by: Michelle Mainwaring

In and around the garden

Friends fundraiser – Gin launch

A great night had by all. Photos include *Jimmy and the Jets* band playing, the Raffle baskets, and some of the auctioned items.



Music at the Begonia

Photos show *Faultline Chorus* (below), *Laura Cheetham* (upper right) and *Resonance Community choir* (right)



Upcoming Events



Friends end of year Mix and Mingle

Don't forget to put in your calendars the Friends end-of-year celebration and catch-up on:

Thursday 8 December 4-6.30pm.

Please check your emails for more details.



MUSIC AT THE BEGONIA



Last Sunday Music at the Begonia for 2022

First Sunday of the month at 11am

Meet at the Begonia House - entry by donation towards the Begonia House refurbishment. Free seating for Friends

December 4, 11am Faultline Chorus

The Faultline Chorus is an international medal winning Sweet Adelines women's barbershop chorus based in Petone. The group love being a part of the greater Wellington community and singing to support events like Music at the Begonia around the region.

They sing their hearts out in their signature pink colour. You can't miss them, and trust us, you don't want to!

Enjoy the performances like a pro.

- Food is not allowed in the Begonia House - if you are feeling peckish Picnic Café is only a few steps away.
- Seating is restricted to Friends of the Wellington Botanic Garden - feel free to bring your own chair to enjoy the hour-long concert or join the Friends - application forms will be available on the day.
- Entrance by Koha - funds raised will go towards building the Friends Endowment Fund.

See the Friends of the Wellington Botanic Garden Website for upcoming Events:

<https://friendsofthewellingtonbotanic.wordpress.com/events/>



The Faultline Chorus in the Begonia House.

WHAT'S ON WALKS AND TALKS

with the Friends of the Wellington Botanic Garden



WALKS

Last Guided Walk for 2022

Free for Friends and Guides

Monday 28 November 11 am Links to the Past

An introduction to the fascinating history of the Wellington Botanic Garden. In 1839 the New Zealand Company in London drew up plans for Wellington which included "a 13 acre reserve for public recreation". Maori villages with some of the best horticultural land lived in the area.

On this introductory, easy 75-minute walk, we can learn about heritage trees and buildings, and memorials to people.

Meet at the heritage Founders' Gate, Glenmore St. \$5 cash for non-members

Events and Projects

TALKS

Brown bag lunch lectures

Wellington Botanic Garden - A pharmacy by any other name?

On 1 November Reg Harris gave a Brown Bag Lunch talk at The Tree House to Garden staff, Friends and members of the public on 'pharmaceutical botany'. He focused mainly on familiar plants growing within the Garden and its immediate surrounds, but also expanded the repertoire a little to encompass plants trying to be a bit exotic.

The talk zeroed in strongly on the mechanisms of action that make medicinal plants, well, medicinal, and how an understanding of 'how things work' is essential in developing the manufacture of medicines based on these plants.

A kōwhai biochemical was linked with smoking cessation, and tōtara's vitamin A with the maintenance of healthy eyesight. Kawakawa was shown to have significant anti-inflammatory properties. Foxglove was highlighted as the source of a powerful antidote (*Digoxin*) to irregular heartbeat [cardiac arrhythmia]. Cranberry was invoked as a battler of urinary tract infections and gastric ulcers.

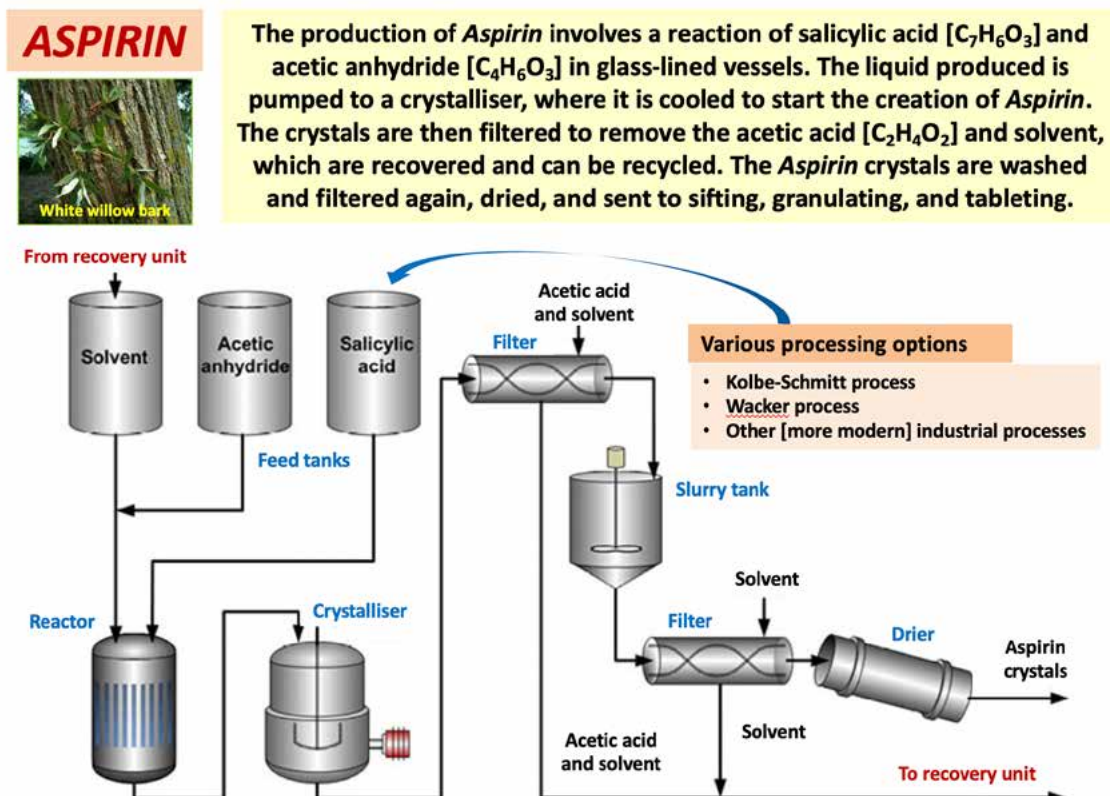
Maidenhair tree extract was shown to help prevent thrombosis (blood clotting), and alfalfa, or lucerne, was seen to be the enemy of so-called 'bad' cholesterol.

The global importance of yew as one of the main sources of a range of cancer-fighting drugs was underlined. Rosy

periwinkle (aka Madagascar periwinkle) was revealed as a 'new girl on the block' in the fight against various cancers. The audience was perhaps a little surprised to learn that flax extracts (of a type found also in plants of the gourd family) have anti-cancer properties, and that a flax-yew conjugation brings possibilities for a new cancer-fighting weapon where the sum-effect of the two plant species combined has been reported to be more efficacious than either on its own.

The inner bark of pohutukawa was revealed as the source of a biochemical capable of treating dysentery and diarrhoea.

Finally, the audience was told of the long history, from the time of the ancient Egyptians and Sumerians, of a substance in white willow (inner bark here, also) in offsetting low-level pain. And of the same white willow as the start-point in the late 19th century for the industrial manufacture of *Aspirin*.



A slide from Reg's lunch time talk on Wellington Botanic Garden - A pharmacy by any other name?

Events and Projects

Science/Educational information

Now available on the Friends website <https://friendsofthewellingtonbotanic.wordpress.com/science/>

The information and slideshows cover:

Human Health: Harnessing plant and fungus medicinal powers (Note...this embraces some of the Pharmaceutical Botany content but expands on it considerably.)

Photosynthesis: Unlocking it: A trek starting in the 17th century.

Pharmaceutical Botany: A selection of plants in or near Wellington Botanic Garden.

Forest and Field: Ground level to tree tops.....really a general appreciation of botany.

Scientific Names: Helpful? or Otherwise?

Plant Diseases: A wake-up call for disease research occasioned by the Irish Potato Famine.

Others in the pipeline include:

Molecules at Work: Plant growth regulators and plant pigments.

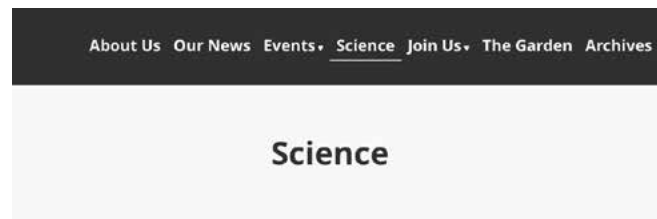
Fungi at Large: Basics, mycelial communications and signalling, the 'Wood-wide web'.

Wood and Water: Wood structure, lignin and its partnership with cellulose, getting water to the top.

Shooting Mechanisms: Seed and spore dispersal for plants and fungi respectively.

We're closer than you think: The similarities between plants and humans in energy production and use, cellular respiration, keeping warm, wound healing, and other.

Plants Harming Plants: Parasitism, allelopathy, agricultural field practice.



Phyto- and Myco-medicine

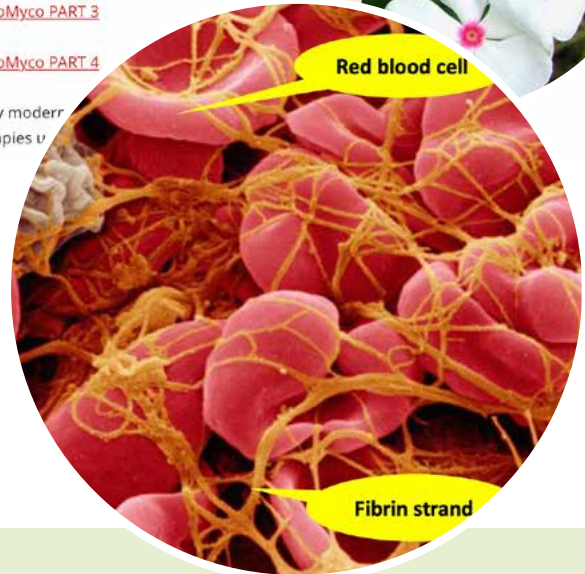
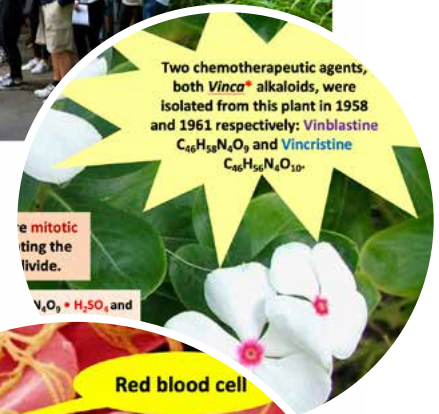
[PhytoMyco PART 1](#)

[PhytoMyco PART 2](#)

[PhytoMyco PART 3](#)

[PhytoMyco PART 4](#)

Many modern therapies v



Projects in the pipeline

Friends Olive Oil – Will be sold in the Treehouse Shop.

Artist in Residence – the committee is currently investigating an opportunity for an Artist in Residency project for 2023.

We need your help

If you would like to help the Friends with projects, become a Garden Guide or Ambassador please email for more information: wbgfriends@gmail.com

Events and Projects

Kew Garden prints

Kew Garden prints available for sale.

Peter Wedde will have these on his website (peterweddeantiques.co.nz) pre-Christmas.

Total of 22 available. They measure 25 cm x 15.5 cm. This could make an attractive Christmas present.

Prints are of original artworks by:

- Margaret Stones
- Christabel King
- Mary Grierson

If interested please contact Peter at peter@peterweddeantiques.co.nz



Kew Botanic print examples.



Kew Botanic prints. PHOTO: ANNE MCLEAN

Finding inspiration in the garden



Reg's doodling at home

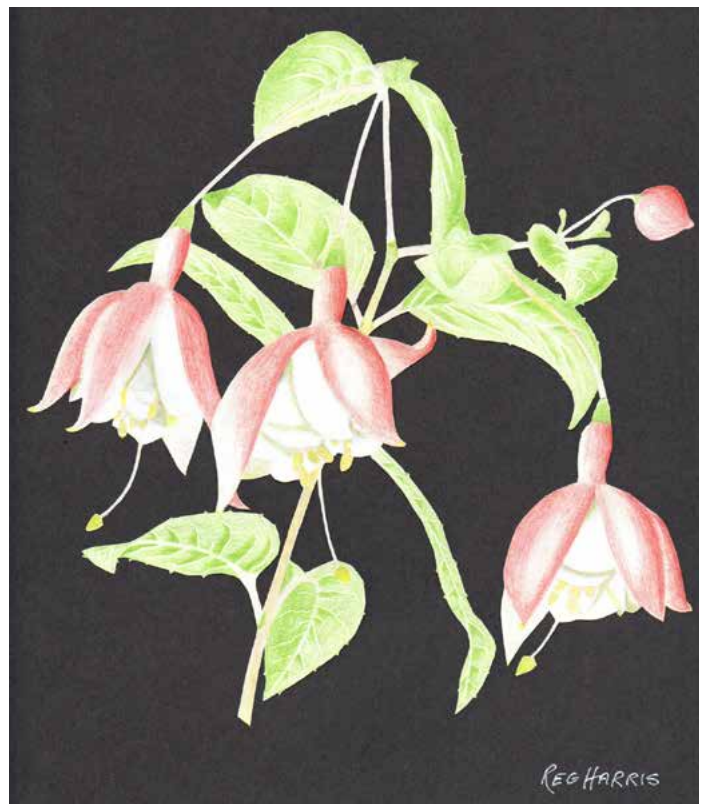
Not only presenting talks on plants in science, Reg Harris a committee member of the Friends, has a hidden talent. Taking inspiration from gardens, Reg creates his drawings of plants with coloured pencils. A mixture of Prismacolour and Faber Castel.

Above: kākā beak *Clianthus puniceus*. Drawn 2017.

Top right: Kōwhai *Sophora microphylla*. Drawn in 2018.

Lower right: a Fuchsia species *Fuchsia*. "After drawing this (possibly 40 years ago from a specimen growing just outside my office in Silverstream, Upper Hutt) I decided to fill in the background with a yellow colour...big mistake, it looked hideous. It sort of sat around in a folder for ages until a few years ago I pulled it out and got stuck into it with a dissection scalpel. I carefully cut around the picture...very difficult, especially for the thin bits. I then spot-glued the finished item onto black card. About 2 years ago I gave the fading colours a touch-up".

Reg highlighted kōwhai as a medicinal plant in his Brown bag talk Pharmaceutical botany at The Tree House on November 1. See page 9 for more topics available online.



Newsletter content

What would you like to see in the newsletter?

All contributions to the newsletter are welcomed. Material for the **March 2023** Newsletter issue should be submitted by **Friday 17 February 2023** to the Editor at: mmainwaring@xtra.co.nz

Thank you to all past and present contributors – you help to make it special for others to enjoy.

Photo Competition

In the March Newsletter we will announce a competition to take a photo/s for our newsletter masthead. In the meantime keep an eye out over the Christmas break for photo opportunities in the Garden.

More information to come in our March issue.



A big thank you to our sponsors

Please support our sponsors who helped to make our Gin Launch fundraiser a great success.



Contact details

Friends of the Wellington Botanic Garden
C/- 101 Glenmore Street
Kelburn, Wellington 6012

President:
Mazz Scannell
mazzscannell@gmail.com

Membership Secretary:
Anne-Marie Ngan
annemariengan@gmail.com

Newsletter Editor:
Michelle Mainwaring
mmainwaring@xtra.co.nz

For more information:
friendsofthewellingtonbotanic.wordpress.com/

 Friends of the Wellington Botanic Garden
 wbgfriends@gmail.com

